

PUBLIC UTILITIES COMMISSION

505 VAN NESS AVENUE

SAN FRANCISCO, CA 94102-3298



May 12, 2017

Jeffrey T. Linam
 Director -Rates & Regulation
 California-American Water Company
 4701 Beloit Dr.
 Sacramento, CA 95838-2434

Dear Mr. Linam,

The Commission has approved California-American Water Company's Advice Letter No.1165, filed on April 21,2017, regarding the Meadowbrook Acquisition implementation , which was submitted in accordance with decision D.16-12-014.

Enclosed are copies of the following revised tariff sheets for the utility's files

<u>P.U.C. Sheet No.</u>	<u>Title of Sheet</u>
8507-W	TARIFF SCHEDULES APPLICABLE TO WATER SERVICE
8508-W	Schedule No. SC-MB-1 Sacramento District Tariff Area - Meadowbrook GENERAL METERED SERVICE
8509-W	Schedule No. CA-4 California American Water PRIVATE FIRE PROTECTION SERVICE
8510-W	PRELIMINARY STATEMENT (continued)
8511-W	Service Area Map Sacramento District Tariff Area SERVICE AREA MAP – Index
8512-W	Service Area Map Sacramento District Tariff Area SERVICE AREA MAP – Page 12 - Meadowbrook
8513-W	TABLE OF CONTENTS (continued) (Page 3)
8514-W	TABLE OF CONTENTS (continued) (Page 2)

8515-W

TABLE OF CONTENTS (continued)
(Page 1)



Please contact Jocelyn Wong at 415-703-2144 if you have any questions.

Thank you ,

/s/ SREEJA MELUVEETIL

Sreeja Meluveetil
Water & Sewer Advisory Branch
Division of Water and Audits

Enclosures

TITLE

TARIFF SCHEDULES
Applicable to
WATER SERVICE

Together with Information Affecting

RATES AND SERVICE
Of
CALIFORNIA-AMERICAN WATER COMPANY
655 West Broadway, #1410
San Diego, CA 92101
Telephone Number: 619-446-4760
Internet Address: <http://www.calamwater.com>

Operating In or Near

Coronado, Imperial Beach, and San Diego County; Baldwin Hill, Bradbury, Duarte, Irwindale, Ladera Heights, Monrovia, Rosemead, San Gabriel, San Marino, Temple City, Windsor Hills, and Viewpark, Adams Ranch, Los Angeles County; Carmel-by-the Sea, Carmel Valley, Monterey, Pacific Grove, Seaside, Del Rey Oaks, Sand City, Hidden Hills, Ryan Ranch, Bishop, Laguna Seca, Ambler Park, Oaks, Rim Rock, Rancho El Toro, Salina, Ralph Lane, Chualar, Toro, Garrapata, Monterey County; Thousand Oaks and Camarillo, Newbury Park, Ventura County; Larkfield, Fulton, San Rosa and Sonoma County; Cordova, Rosemont, Parkway Estates, Lindale, Foothill Farms, Arlington Heights, Arden Highlands, Arden Estates and Security Park, City of Citrus Heights, Antelope and Sabre City, Sacramento and Placer County; Dunnigan in Yolo County; Geyserville in Sonoma County; Meadowbrook in Merced County; City of Isleton, Walnut Grove, Morgan Creek, Doyle Ranch, Sun Valley and Riolo Greens. (T)

The following tariff schedules embracing Rates and Rules have been regularly filed with the Public Utilities Commission of the State of California and are the effective rates and rules of this Utility.

No officer, inspector, solicitor, agent or employee of the Utility has any authority to waive, alter or amend these tariff schedules or any part thereof in any respect.

(TO BE INSERTED BY UTILITY)

ADVICE LETTER NO. 1165

ISSUED BY

J. T. LINAM

NAME

(TO BE INSERTED BY C.P.U.C.)

DATE FILED 04-21-2017

EFFECTIVE 04-21-2017

DECISION NO. D.16-12-014

DIRECTOR – Rates & Regulatory

TITLE

RESOLUTION _____

Schedule SC-MB-1
Sacramento District Tariff Area - Meadowbrook
GENERAL METERED SERVICE

APPLICABILITY

(N)

Applicable to all metered water service.

TERRITORY

The unincorporated area known as Meadowbrook Tract, including Nos. 1 and 2, located approximately 1-1/2 miles northwest of the city of Merced, Merced County

RATES

Quantity Rates:

All water, for the first 112 CGL, Per 100 gal (CGL)	\$0.1270
All water in excess of 112 CGL Per 100 gal (CGL)	\$0.1524

Service Charge: General Metered

	<u>Per Meter</u> <u>Per Month</u>
For 5/8 x 3/4-inch meter	\$15.58
For 3/4-inch meter	\$15.58
For 1-inch meter	\$38.95
For 1-1/2-inch meter	\$77.90
For 2-inch meter	\$124.64
For 3-inch meter	\$233.70
For 4-inch meter	\$389.50
For 6-inch meter	\$770.00

The Service Charge is a readiness-to-serve charge, which is applicable to all general metered services and to which is added the charge for water used computed at the Quantity Rates.

SPECIAL CONDITIONS:

1. The established billing cycle for General Metered Service is every month.
2. All bills are subject to the reimbursement fee set forth in Schedule No. UF.
3. A late charge will be imposed per Schedule No. CA-FEES.
4. In accordance with Section 2714 of the Public Utilities Code, if a tenant in a rental unit leaves owing the company, service to subsequent tenants in that unit will, at the company's option, be furnished on the account of the landlord or property owner.

(N)

(TO BE INSERTED BY UTILITY)

ADVICE LETTER NO. 1165

ISSUED BY

J.T. LINAM

NAME

(TO BE INSERTED BY C.P.U.C.)

DATE FILED 04-21-2017

EFFECTIVE 04-21-2017

DECISION NO. D.16-12-014

DIRECTOR – Rates & Regulation

TITLE

RESOLUTION _____

Schedule No. CA-4
 California American Water
PRIVATE FIRE PROTECTION SERVICE

RATES (continued)

	Per Month	
Sacramento District - Meadowbrook System		
For each 4-inch connection or smaller	\$14.48	(N)
For each 6-inch connection	\$21.72	(N)
For each 8-inch connection	\$28.96	(N)
San Diego District		
For each 4-inch connection or smaller	\$28.53	
For each 6-inch connection	\$55.75	
For each 8-inch connection	\$81.54	
For each 10-inch connection	\$117.00	
For each 12-inch connection	\$168.74	
Ventura District		
For each 4-inch connection or smaller	\$38.43	
For each 6-inch connection	\$59.66	
For each 8-inch connection	\$81.13	
For each 10-inch connection	\$102.96	
For each 12-inch connection	\$130.13	

SPECIAL CONDITIONS APPLICABLE TO ALL SERVICE AREAS

1. The fire protection service and connection shall be installed by the Utility or under the Utility's direction. Cost of the entire fire protection installation shall be paid for by the applicant. Such payment shall not be subject to refund.
2. If the distribution main of adequate size to serve a private fire protection system in addition to all other normal service does not exist in the street or alley adjacent to the premises to be served, then a service main from the nearest existing main of adequate capacity will be installed by the utility at the cost of the applicant. Such cost shall not be subject to refund.
3. The installation housing the detector type check valve and meter and appurtenances there to shall be in a location mutually agreeable to the applicant and the Utility. Normally, such installation shall be located on the premises of applicant, adjacent to the property line. The expense of maintaining the fire protection facilities on the applicant's premises (including the vault, meter, detector- type check valves, backflow device and appurtenances) shall be paid for by the applicant.

(Continued)

(TO BE INSERTED BY UTILITY)		ISSUED BY	(TO BE INSERTED BY C.P.U.C)
ADVICE LETTER NO.	1165	J.T. LINAM	DATE FILED
		NAME	04-21-2017
DECISION NO.	D.16-12-014	DIRECTOR - Rates & Regulatory	EFFECTIVE
		TITLE	04-21-2017
			RESOLUTION

PRELIMINARY STATEMENT

BC. The Memorandum Account for Environmental Improvements and Compliance Issues for Acquisitions

- 1. PURPOSE: The purpose of the account is to track costs associated with required improvements related to environmental and compliance issues in the Dunnigan, Geyserville, and Meadowbrook service territories. Examples of such costs include, but are not limited to, nitrate mitigation, installation of geosynthetic liners, repair of a cracked surface seal on the main well, construction of a back-up well and back-up electrical power source to maintain minimum pressure in the event of failure in grid power. This account excludes costs related to hexavalent chromium mitigation since there is a separate memorandum account for those costs. (T)
- 2. APPLICABILITY: California American Water’s Sacramento District – Dunnigan, Geyserville, and Meadowbrook Service Areas. (T)
(T)
- 3. ACCOUNTING PROCEDURE:
 - a. A debit entry will be created to capture costs associated with the account.
 - b. A debit or credit entry equal to interest on the balance in the account at the beginning of the month and half the balance after the above entries, at a rate equal to one-twelfth of the rate on 90 day non-financial Commercial Paper, as reported in the Federal Reserve Statistical Release, H.15 or its successor.
 - c. A credit entry will be made to transfer the balances to the appropriate district Consolidated Expense Balancing Account’s (CEBA) upon Commission approval.
- 4. RATEMAKING PROCEDURE: There is currently no ratemaking component to the memorandum account. Requests for recovery of any balance are to be processed according to General Order 96-B and Standard Practices or otherwise determined in a Commission decision. Upon Commission review and approval, balances shall be transferred to the appropriate district CEBA’s for recovery/refund.

(continued)

(TO BE INSERTED BY UTILITY)

ISSUED BY

(TO BE INSERTED BY C.P.U.C.)

ADVICE LETTER NO. 1165

J.T. LINAM

DATE FILED 04-21-2017

NAME

EFFECTIVE 04-21-2017

DECISION NO. D.16-12-014

DIRECTOR – Rates & Regulatory

RESOLUTION _____

TITLE

(See Attached – Sacramento District Tariff Area – Index)

(TO BE INSERTED BY UTILITY)

ADVICE LETTER NO. 1165

ISSUED BY

J.T. LINAM

NAME

(TO BE INSERTED BY C.P.U.C.)

DATE FILED 04-21-2017

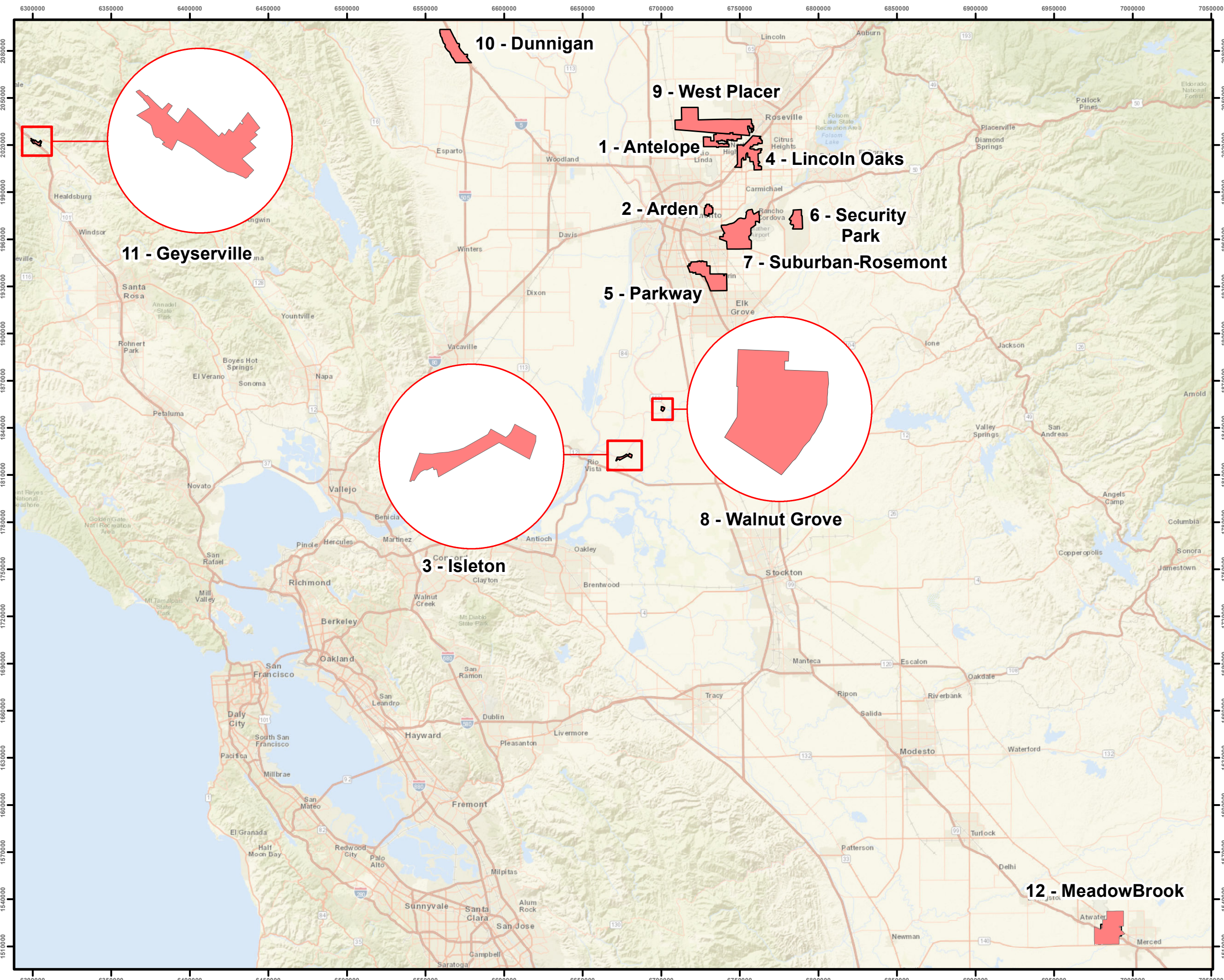
EFFECTIVE 04-21-2017

DECISION NO. D.16-12-014

DIRECTOR – Rates & Regulation


TITLE

RESOLUTION _____

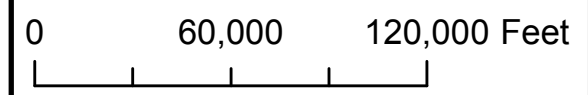
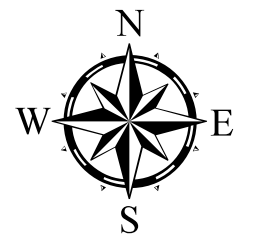


Service Area Map Sacramento District Index

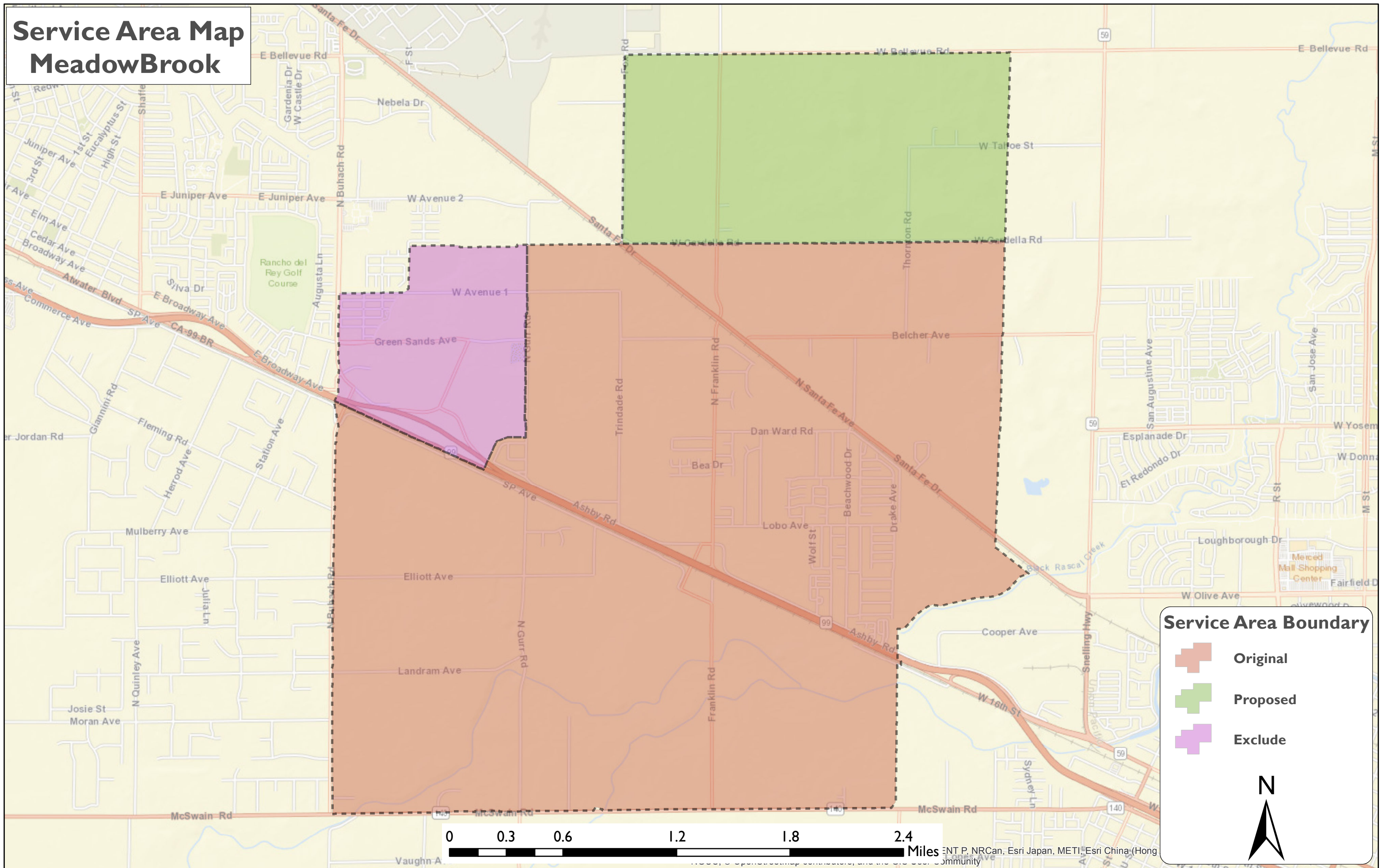
Legend

 Service Area Boundary




SYSTEM	PAGE
ANTELOPE	1
ARDEN	2
ISLETON	3
LINCOLN OAKS	4
PARKWAY	5
SECURITY PARK	6
SUBURBAN/ROSEMONT	7
WALNUT GROVE	8
WEST PLACER	9
DUNNIGAN	10
GEYSERVILLE	11
MEADOWBROOK	12



Service Area Map MeadowBrook



Service Area Boundary

-  Original
-  Proposed
-  Exclude



0 0.3 0.6 1.2 1.8 2.4 Miles

© 2015 Esri. All rights reserved. Esri, the Esri logo, ArcGIS, and the ArcGIS logo are either registered trademarks or trademarks of Esri Inc. in the United States and/or other countries. Other brands and product names are trademarks of their respective owners.

TABLE OF CONTENTS (Continued)

(Page 3)

<u>SUBJECT MATTER OF SHEET</u>	<u>C.P.U.C. SHEET NO.</u>
<u>RATE SCHEDULES (Continued):</u>	
<i>(Ambler Park, Ralph Lane & Chualar Service Areas)</i>	
MO-ARC-1 General Metered Service	8485-W, 8426-W, 8427-W, 8296-W, 8027-W, 7642-W, 8237-W
<i>(Toro)</i>	
MO-TO-1 General Metered Service	8465-W, 8466-W, 8019-W, 7644-W
<i>(Garrapata)</i>	
MO-GA-2 General Flat Rate Service	7693-W, 8170-W
Sacramento District	
SC-1 General Metered Service	8353-W, 8354-W, 8355-W, 8028-W, 7635-W
SC-DU-1 General Metered Service	8160-W
SC-DU-1F Flat Rate Service	8161-W
SC-GY-1 General Metered Service	8316-W
SC-GY-1F Flat Rate Service	8317-W
SC-MB-1 General Metered Service	8508-W
San Diego County District	
SD-1 General Metered Service	8367-W, 8368-W, 8504-W, 8013-W, 7624-W
Ventura County District	
VN-1 General Metered Service	8335-W, 8336-W, 8435-W, 8014-W, 7627-W
VN-9MC Metered Construction Water	8338-W, 8436-W, 8015-W, 7629-W

(N)

(Continued)

(TO BE INSERTED BY UTILITY)
ADVICE LETTER NO. 1165

ISSUED BY
J. T. LINAM
NAME

(TO BE INSERTED BY C.P.U.C.)
DATE FILED 04-21-2017

DECISION NO. _____

DIRECTOR – Rates & Regulatory
TITLE

EFFECTIVE 04-21-2017
RESOLUTION _____

TABLE OF CONTENTS (Continued)

(Page 2)

<u>SUBJECT MATTER OF SHEET</u>	<u>C.P.U.C. SHEET NO.</u>
<u>SERVICE AREA MAP (Continued):</u>	
Sacramento	8511-W, 6592-W, 6593-W, 6594-W, 6595-W, 6596-W, 7500-W, 6598-W, 6599-W, 6600-W (C)
Sacramento- Dunnigan	8163-W
Sacramento- Geyserville	8321-W
Sacramento - Meadowbrook	8512-W (N)
San Diego County	6601-W, 6602-W
Ventura County	6603-W, 6604-W
<u>RATE SCHEDULES:</u>	
All Districts -- Low Income Ratepayer Assistance Program	
CA-LIRA California American Water	8363-W, 8501-W, 8488-W, 8467-W, 8350-W, 8370-W, 8240-W, 7724-W, 7725-W, 7726-W
CA-4 California American Water	8328-W, 8509-W, 7739-W, 7740-W, 7741-W, 8001-W, 8020-W, 8021-W, 7628-W, 7625-W, 7636-W, 7640-W, 7643-W, 7632-W, 7634-W, 8197-W, 8206-W (C)
CA-4H Private Fire Hydrant Service	8372-W, 7743-W, 7744-W, 8186-W, 8002-W, 8022-W, 7626-W, 7641-W
Larkfield District	
LK-1 General Metered Service	8360-W, 8361-W, 8362-W, 7995-W, 8018-W, 7633-W
LK-F Facilities Fees	7651-W
Los Angeles County District	
LA-1 General Metered Service	8344-W, 8345-W, 8346-W, 8311-W, 8347-W, 8250-W, 8016-W, 7630-W
LA-3M Measured Irrigation Service	8348-W, 7712, 8349-W, 8251-W, 8017-W, 7631-W
Monterey County District	
<i>(Monterey Main, Hidden Hills, Ryan Ranch, & Bishop Service Areas)</i>	
MO-1-SF General Metered Service	8481-W, 8440-W, 8441-W, 8471-W, 8472-W, 8444-W, 8399-W, 8445-W, 8023-W
MO-1-MF General Metered Service	8486-W, 8447-W, 8448-W, 8473-W, 8474-W, 8451-W, 8452-W
MO-1C General Metered Service	8482-W, 7673-W, 7674-W, 7675-W, 7676-W, 8454-W, 8475-W, 8476-W, 8227-W, 8401-W, 8410-W, 8411-W, 7683-W
MO-1O General Metered Service	8483-W, 8484-W, 7686-W, 7687-W, 8477-W, 8478-W, 8457-W, 8403-W, 8413-W, 7692-W

(TO BE INSERTED BY UTILITY)

ADVICE LETTER NO. 1165

ISSUED BY

J. T. LINAM

NAME

(TO BE INSERTED BY C.P.U.C.)

DATE FILED 04-21-2017

EFFECTIVE 04-21-2017

DECISION NO. _____

DIRECTOR – Rates & Regulatory

TITLE

RESOLUTION _____

TABLE OF CONTENTS

(Page 1)

The following listed tariff sheets contain all effective rates and rules affecting the charges and services of the Utility, together with other pertinent information:

<u>SUBJECT MATTER OF SHEET</u>	<u>C.P.U.C. SHEET NO.</u>	
TITLE PAGE	8507-W	(C)
TABLE OF CONTENTS	8515-W, 8514-W, 8513-W, 8396-W, 8499-W, 8068-W, 8069-W, 8070-W, 8071-W	(C)
PRELIMINARY STATEMENTS	7828-W, 8458-W, 7748-W, 7749-W, 7750-W, 7751-W, 7752-W, 7753-W, 7754-W, 7755-W, 7756-W, 7757-W, 8079-W, 7759-W, 7830-W, 7831-W, 7832-W, 7833-W, 7834-W, 7835-W, 7836-W, 7837-W, 7838-W, 7769-W, 7770-W, 7771-W, 7772-W, 7773-W, 7774-W, 7775-W, 7776-W, 7777-W, 7778-W, 7779-W, 7780-W, 7781-W, 7782-W, 7783-W, 7784-W, 7785-W, 7786-W, 7787-W, 7788-W, 7789-W, 7790-W, 7791-W, 7792-W, 7793-W, 7794-W, 7839-W, 7796-W, 7797-W, 7798-W, 7799-W, 7800-W, 7801-W, 7802-W, 7803-W, 7804-W, 8510-W, 8081-W, 8082-W, 8178-W, 8302-W, 8459-W, 8460-W	(C)
<u>SERVICE AREA MAP:</u> California-American Water Company	5470-W	
Larkfield	6569-W	
Los Angeles County	6570-W	
Baldwin Hills	6571-W, 6572-W,	
Duarte	6578-W	
San Marino	6573-W, 6574-W, 6575-W, 6576-W, 8211-W	
Monterey County	7053-W, 6580-W, 6581-W, 6582-W, 6583-W, 6584-W, 6585-W, 6586-W, 6587-W, 6588-W, 6589-W, 6590-W, 944 -W, 945 -W, 947 -W, 948 -W, 949 -W, 950 -W, 951 -W, 952 -W, 953 -W, 954 -W, 955 -W, 957 -W, 958 -W, 959 -W, 960 -W, 961 -W, 962-W, 963 -W, 964 -W, 966 -W, 967 -W, 968 -W, 969 -W, 971 -W, 972 -W, 973 -W, 974 -W, 975 -W, 976 -W, 977 -W, 978 -W, 979 -W, 980 -W, 981 -W, 982 -W, 983 -W, 984 -W, 7054-W	

(Continued)

(TO BE INSERTED BY UTILITY)
ADVICE LETTER NO. 1165

ISSUED BY
J. T. LINAM
NAME

(TO BE INSERTED BY C.P.U.C.)
DATE FILED 04-21-2017

DECISION NO. _____

DIRECTOR – Rates & Regulatory
TITLE

EFFECTIVE 04-21-2017
RESOLUTION _____